

SnO₂ (standard powder)

1) Impurity

Unit: ppm

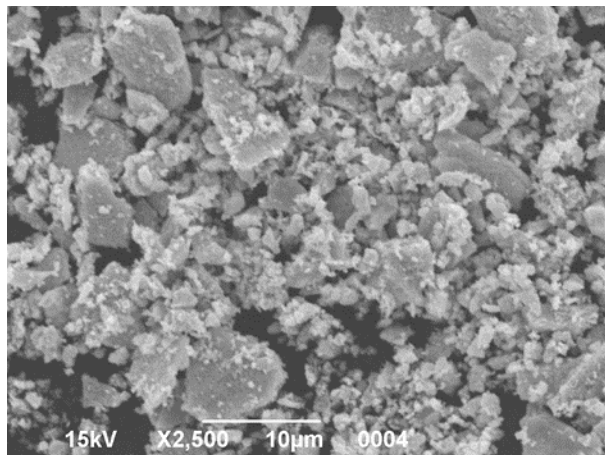
Element	Si	Fe	Ca	Mg	Al	Cr	Cu	Zn	Zr	Cd	Pb
4N specs	≤10	≤10	≤5	≤5	≤5	≤5	≤5	≤5	≤5	≤5	≤10
Typical data	2	1	<1	<1	<1	<1	<1	<1	<1	<1	5

2) BET and powder size distribution

BET	4~8m ² /g
average powder size	25~60μ m

- * Higher BET (8~12m²/g) type is also available
- * Fine powder SnO₂ is also available. Please refer to the other data sheet for SnO₂ fine powder.

SEM image



Powder size distribution

